



Colmar T8000 FSCE
tracked road rail
excavator crane



Tracked Colmar RRV

We have a fleet of heavy lifter road rail vehicle (RRV) excavator cranes including Colmar T8000 FSCE's, that work on both road and rail infrastructure, and have the ability to work next to rail lines open to traffic (ALO).

Our Colmar T8000 FSCE'S can be hired to undertake several activities, including lifting and handling operations, level crossing renewals, plain line renewals, lifting panels - solo or in tandem - and lifting support for S&C renewals and construction, as well as specialised works such as signalling, OLE, and telecoms renewals and upgrades.

With the ability to convert on site to long reach RRV's without the need for hiring in an additional machinery, we provide a flexible and cost-effective solution to suit your needs.

We also have experienced specialists that provide support on lift planning and methodology, and all machine transport delivery and collection is managed in-house.



Attachments

Along with our RRV hire, we have a wide range of attachments to help undertake a variety of activities, including various hydraulic grabs for rail sleepers and signal posts, rail trailers and ballast brushes, and a wide range of specialist attachments for thimbling rail, ballast profiling, drainage, piling and more.

Our range of attachments includes:

- Rail lifting beams
- Universal beam
- Various lifting beams
- Log grab
- Sleeper grab
- Camlock
- Drag clamp
- Pallet forks
- Thimble
- Drum carrier
- Clamshell bucket
- Ballast brushes and trailers
- Trailer mounted drum carriers
- Cable handling yokes
- Profile bucket
- A selection of various buckets
- Various hydraulic grabs
- Twin tamping banks
- Rhino horn jib extensions
- BSP impact hammers
- Movax vibratory hammers.



Operation information

Loading/off loading or on/off tracking	1 operator + machine controller or crane controller
Operation	1 operator + machine controller or crane controller
RCI system	GKD 3RCI
ALO working	Yes
On/off track, travel and work under live overhead lines	Yes
Quick hitch installed	Yes
Tandem lift mode	Yes
Towing capacity	80,000 kg / 4 trailers

A full set of duty charts are available upon request for all tandem lift modes.

Lifting capacities

Rail mode – Level rail – tool/bucket pin – unlocked – 0° – height 3m – distance 5m = 8.4t

Rail mode – Level rail – tool/bucket pin – locked up – 0° – height 3m – distance 5m = 9t

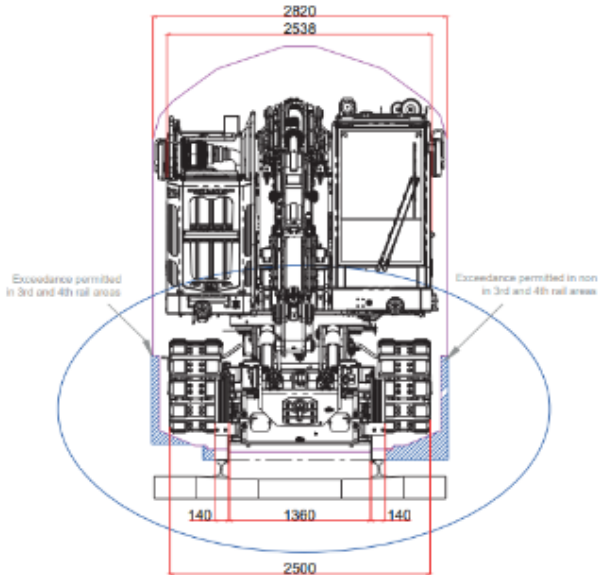
Production information

Lifting point	SWL	Maximum reach
Auxiliary	6 tonne	7m
Tool pin (no quick hitch)	10 tonne	7.5m
Quick hitch lifting eye	6 tonne	7.9m
Rhino horn 3 metre	3.4 tonne	10.7m

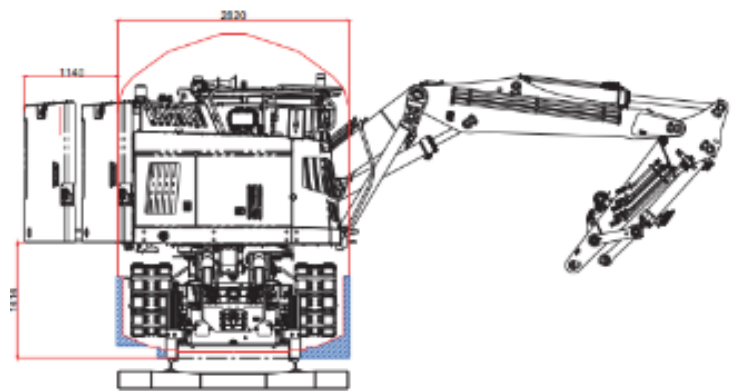
For further information please contact VolkerRail operations manager, Scott Almond, on scott.almond@volkerrail.co.uk

Dimensions

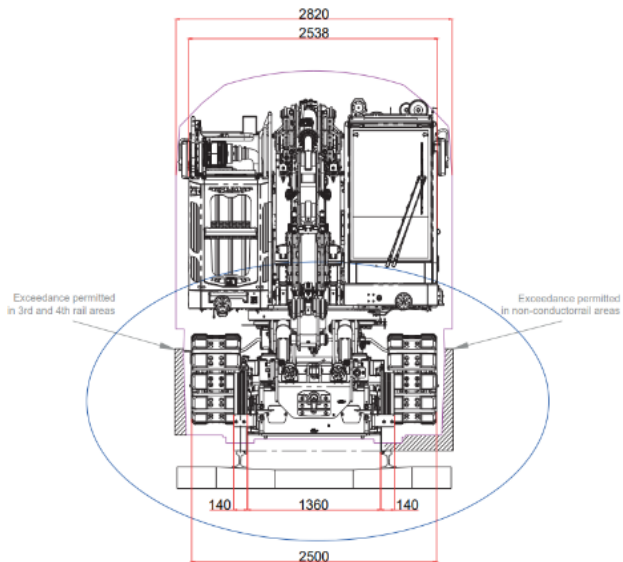
Gauge W6a



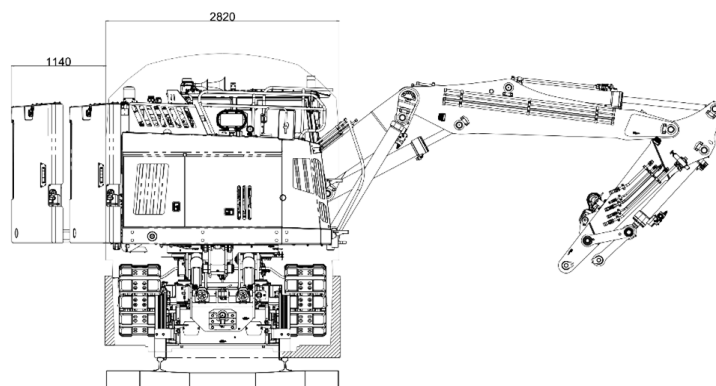
Gauge W6a



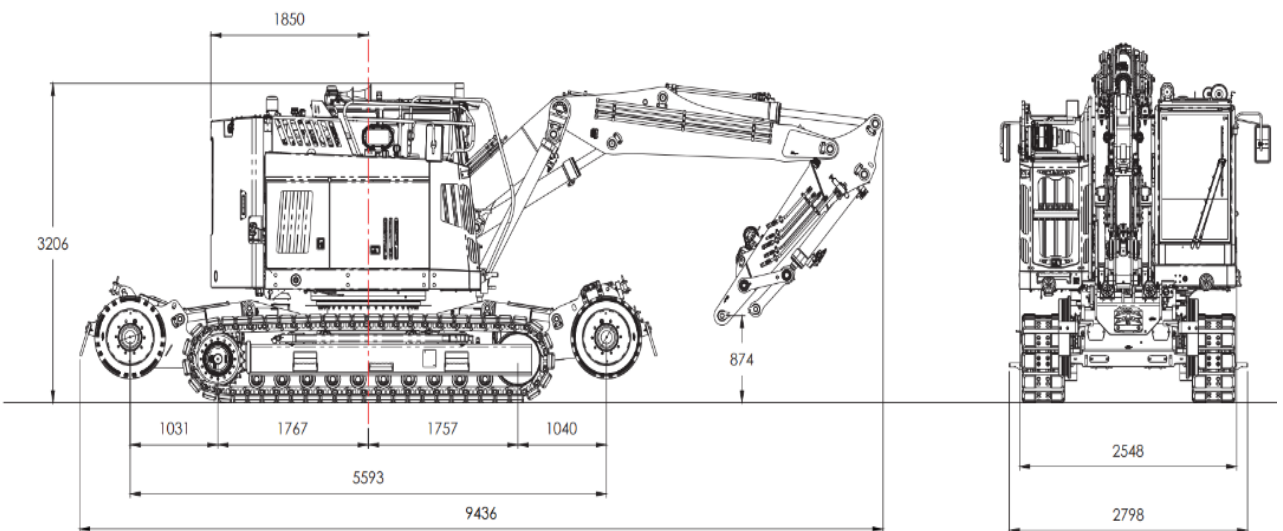
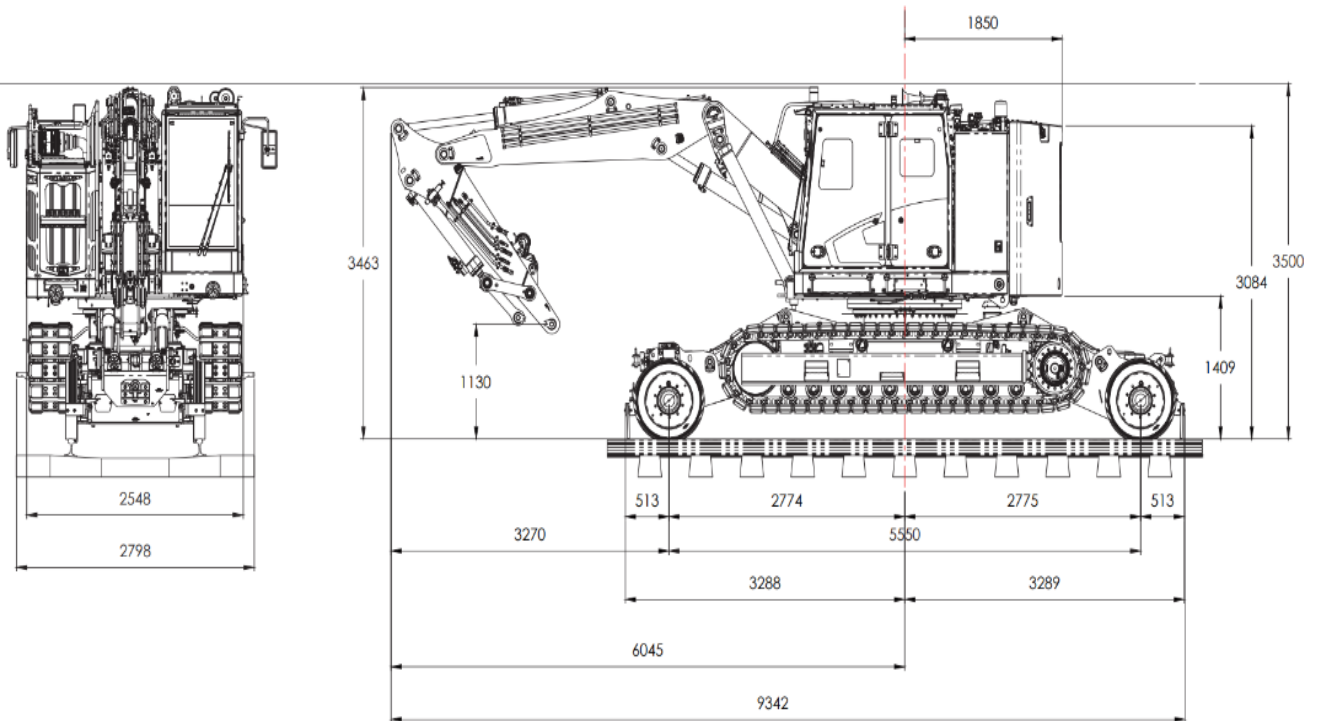
Plant gauge



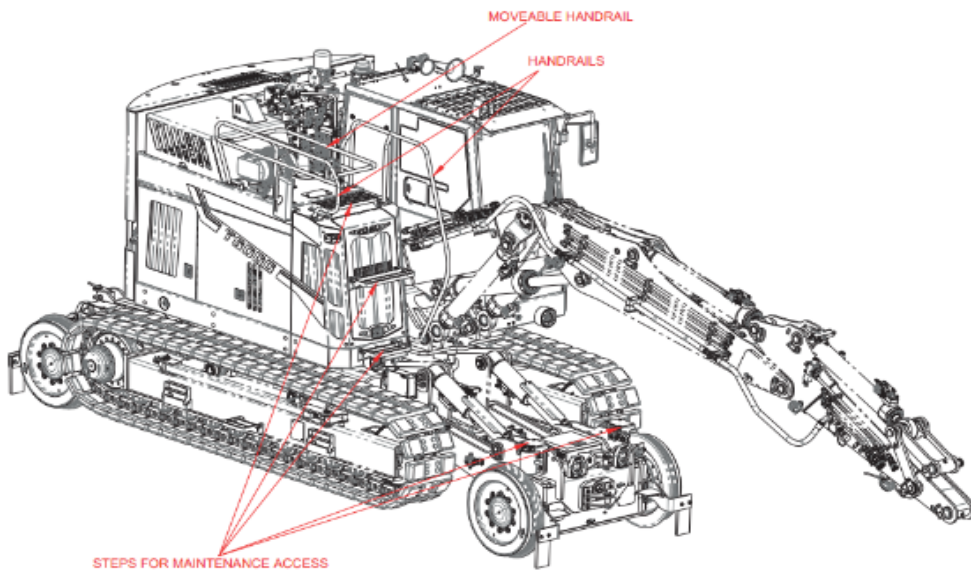
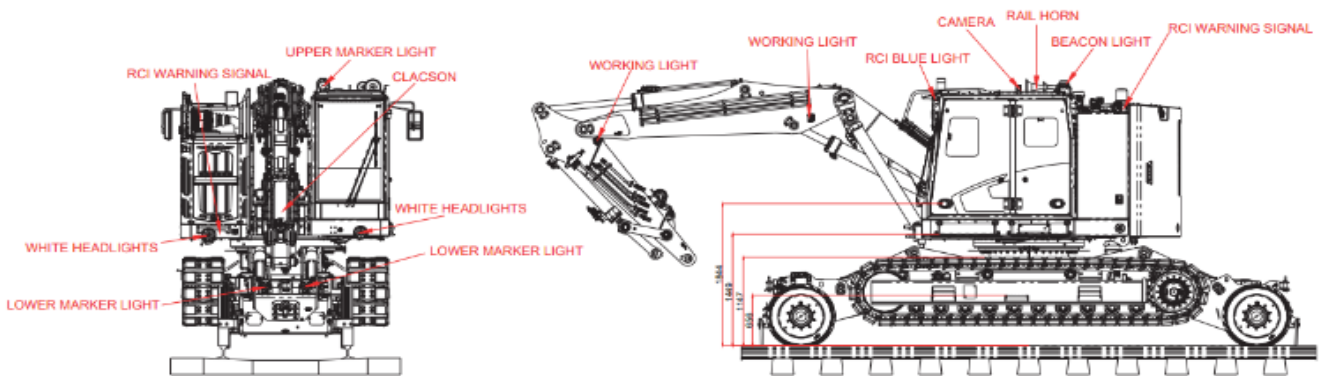
Plant gauge



Dimensions



Dimensions and layout



Engine specifications

Brand	DEUTZ
Model	TDC 6.1 – L6 stage V
Cycle	6
Type	Turbocharged
Injection	Direct
Cylinders/bore x stroke	6 x 101 x 126mm
Displacement	6057cm ³
Max power	150 kw
Calibration speed	2200 rpm
Cooling system	Coolant
Air filter	dry
Engine compartment	Sound-proofed with engine mounted on vibration-damping mountings



